

Schule für Tenorposaune

Volume 3

Méthode de Trombone Ténor

Method for Tenor Trombone

Branimir Slokar - Marc Reift

EMR 105C

- | | |
|-----------------|---|
| EMR 105A | Schule für Tenorposaune Vol. 1
Méthode de Trombone Ténor Vol. 1
Method for Trombone Tenor Vol. 1 |
| EMR 105B | Schule für Tenorposaune Vol. 2
Méthode de Trombone Ténor Vol. 2
Method for Trombone Tenor Vol. 2 |
| EMR 105C | Schule für Tenorposaune Vol. 3
Méthode de Trombone Ténor Vol. 3
Method for Trombone Tenor Vol. 3 |
| EMR 105D | Vollständige Schule für Tenorposaune
Méthode de Trombone Ténor complète
Complete Method for Trombone Tenor |

⑤

Die Terz

La tierce

The third

Musical score for 'Die Terz' (The third) in bass clef, 6/8 time, key of B-flat major. The score consists of five staves. Fingerings are indicated by numbers 1, 6, and (5+). The music features a mix of eighth and sixteenth notes, with some triplet patterns.

⑥

Die Quarte

La quarte

The fourth

Musical score for 'Die Quarte' (The fourth) in bass clef, 6/8 time, key of B-flat major. The score consists of seven staves. Fingerings are indicated by numbers 4+, 6, and 8. The music features a mix of eighth and sixteenth notes, with some triplet patterns.

5. Pos.

5. Pos. Musical staff showing a sequence of notes with accidentals (b, b+, b) and a slur over the final three notes.

6. Pos.

6. Pos. Musical staff showing a sequence of notes with accidentals (+, b+) and a slur over the final three notes.

7. Pos.

7. Pos. Musical staff showing a sequence of notes with accidentals (#, +) and a slur over the final three notes.

7. Pos.

7. Pos. Musical staff showing a sequence of notes with accidentals (+, #) and a slur over the final three notes.

6. Pos.

6. Pos. Musical staff showing a sequence of notes with accidentals (b+, +) and a slur over the final three notes.

5. Pos.

5. Pos. Musical staff showing a sequence of notes with accidentals (b+, b) and a slur over the final three notes.

4. Pos.

4. Pos. Musical staff showing a sequence of notes with accidentals (+) and a slur over the final three notes.

3. Pos.

3. Pos. Musical staff showing a sequence of notes with accidentals (b+, b) and a slur over the final three notes.

2. Pos.

2. Pos. Musical staff showing a sequence of notes with accidentals (+, #) and a slur over the final three notes.

1. Pos.

1. Pos. Musical staff showing a sequence of notes with accidentals (b) and a slur over the final three notes.

⑥

1. Pos. 2. Pos. 3. Pos. 4. Pos. 5. Pos. 6. P

1. Pos. 2. Pos. 3. Pos. 4. Pos. 5. Pos. 6. P Musical staff showing a sequence of notes with accidentals (b, b+, b) and slurs over the notes.

①

Tonleitern und Dreiklänge müssen auswendig gelernt werden.

Gammes et arpèges doivent être appris par cœur.

Scales and arpeggios must be learnt by heart and played from memory.

Die Notennamen eintragen.

Inscrire le nom des notes.

Write in the names of the notes.

.....

.....

.....

②

.....

.....

.....

③

.....

④

Die Sekunde

La seconde

The second

.....

.....

.....

.....

⑦

Die Quinte

La quinte

The fifth

Exercise 7 consists of eight staves of music in bass clef, 3/4 time, with a key signature of three sharps (F#, C#, G#). The notation includes various rhythmic patterns, including triplets and sixteenth-note runs. Fingering numbers (3, 5+, +) and accents are used throughout the piece.

⑧

Das Intervall

L'intervalle

Exercise 8 consists of one staff of music in bass clef, 3/4 time, with a key signature of three sharps (F#, C#, G#). The notation features a sequence of notes with various fingering numbers (9, 7, 7+, 5+, 7, +, 5+, +, 9+, +) and accents.

①

C – Dur/Do majeur/C major



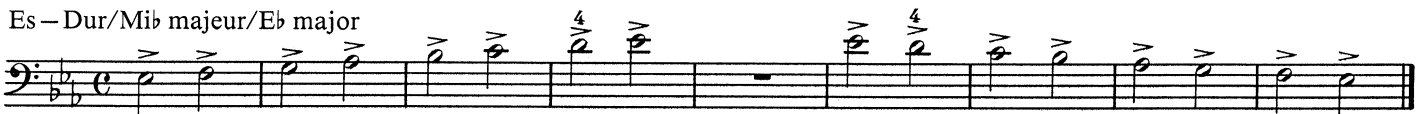
F – Dur/Fa majeur/F major



B – Dur/Sib majeur/Bb major



Es – Dur/Mib majeur/Eb major



As – Dur/Lab majeur/Ab major



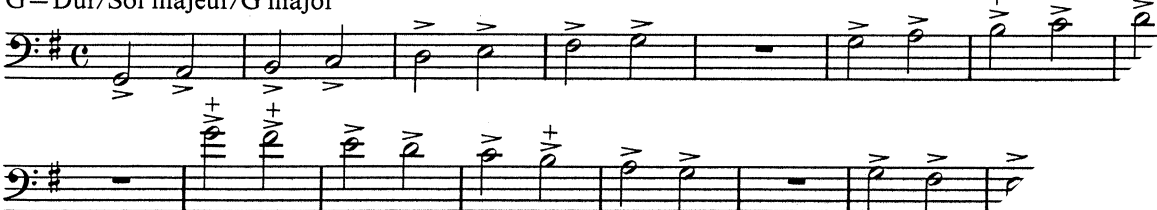
Des – Dur/Réb majeur/Db major



Ges – Dur/Solb majeur/Gb major



G – Dur/Sol majeur/G major



Einspielübungen (3) / Mise en train (3) / Warm-ups (3)

(auswendig)

(par cœur)

(by heart)

①

Mit Mundstück.

Avec l'embouchure.

With the mouthpiece.

②

Mit Instrument.

Avec l'instrument.

With the instru-

+ = Binden mit Zunge
○ = Binden ohne zunge

+ = lier avec la langue
○ = lier sans la langue

+ = slur with the tongue
○ = slur without the tongue

First staff of music with slurs and articulation marks (+ and ○).

Second staff of music with slurs and articulation marks (+ and ○).

Third staff of music with slurs and articulation marks (+ and ○).

Fourth staff of music with slurs and articulation marks (+ and ○).

Fifth staff of music with slurs and articulation marks (+ and ○).

Sixth staff of music with slurs and articulation marks (+ and ○).

Seventh staff of music with slurs and articulation marks (+ and ○).

Eighth staff of music with slurs and articulation marks (+ and ○).

Ninth staff of music with slurs and articulation marks (+ and ○).

Tenth staff of music with slurs, articulation marks (+ and ○), and a '4' marking.

Eleventh staff of music with slurs and articulation marks (+ and ○).

Twelfth staff of music with slurs, articulation marks (+ and ○), and a '6' marking.

Thirteenth staff of music with slurs and articulation marks (+ and ○).

Fourteenth staff of music with slurs, articulation marks (+ and ○), and a '5' marking.

G – Dur/Sol majeur/G major

Two staves of musical notation for the G major scale. The top staff is in bass clef (C4 to G4) and the bottom staff is in treble clef (G4 to C5). Both are in 6/8 time. The key signature has one sharp (F#). The scale is written in ascending and descending directions. The descending line in both staves has three '+' signs above the notes G4, F#4, and E4.

E – moll/Mi mineur/E minor

Two staves of musical notation for the E minor scale. The top staff is in bass clef (C4 to G4) and the bottom staff is in treble clef (G4 to C5). Both are in 6/8 time. The key signature has one sharp (F#). The scale is written in ascending and descending directions. The descending line in both staves has one '+' sign above the note G4.

E – moll melodisch/Mi mineur mélodique/E melodic minor

Two staves of musical notation for the E melodic minor scale. The top staff is in bass clef (C4 to G4) and the bottom staff is in treble clef (G4 to C5). Both are in 6/8 time. The key signature has one sharp (F#). The scale is written in ascending and descending directions. The descending line in both staves has one '+' sign above the note G4.

E – moll harmonisch/Mi mineur harmonique/E harmonic minor

Two staves of musical notation for the E harmonic minor scale. The top staff is in bass clef (C4 to G4) and the bottom staff is in treble clef (G4 to C5). Both are in 6/8 time. The key signature has one sharp (F#). The scale is written in ascending and descending directions. The descending line in both staves has one '+' sign above the note G4.

G chromatisch/Sol chromatique/G chromatic

Two staves of musical notation for the G chromatic scale. The top staff is in bass clef (C4 to G4) and the bottom staff is in treble clef (G4 to C5). Both are in 6/8 time. The scale is written in ascending and descending directions. The descending line in both staves has three '+' signs above the notes G4, F#4, and E4.

E chromatisch/Mi chromatique/E chromatic

Two staves of musical notation for the E chromatic scale. The top staff is in bass clef (C4 to G4) and the bottom staff is in treble clef (G4 to C5). Both are in 6/8 time. The scale is written in ascending and descending directions. The descending line in both staves has one '+' sign above the note G4.

D – Dur/Ré majeur/D major

Two staves of musical notation for the D major scale. The top staff is in bass clef (C4 to C5) and the bottom staff is in treble clef (C4 to C5). The key signature has two sharps (F# and C#). The time signature is common time (C). The scale is written in ascending and descending order. A '+' sign is placed above the final note (D5) in both staves.

H – moll/Si mineur/B minor

Two staves of musical notation for the B minor scale. The top staff is in bass clef (C4 to C5) and the bottom staff is in treble clef (C4 to C5). The key signature has two sharps (F# and C#). The time signature is common time (C). The scale is written in ascending and descending order. '+' signs are placed above the final notes (B5) in both staves. A '2' is written above the final note in the treble staff.

H – moll melodisch/Si mineur mélodique/B melodic minor

Two staves of musical notation for the B melodic minor scale. The top staff is in bass clef (C4 to C5) and the bottom staff is in treble clef (C4 to C5). The key signature has two sharps (F# and C#). The time signature is common time (C). The scale is written in ascending and descending order. '+' signs are placed above the final notes (B5) in both staves. A '3' is written above the final note in the treble staff.

H – moll harmonisch/Si mineur harmonique/B harmonic minor

Two staves of musical notation for the B harmonic minor scale. The top staff is in bass clef (C4 to C5) and the bottom staff is in treble clef (C4 to C5). The key signature has two sharps (F# and C#). The time signature is common time (C). The scale is written in ascending and descending order. '+' signs are placed above the final notes (B5) in both staves. A '3' is written above the final note in the treble staff, and a '5+' is written above the final note in the bass staff.

D chromatisch/Ré chromatique/D chromatic

Two staves of musical notation for the D chromatic scale. The top staff is in bass clef (C4 to C5) and the bottom staff is in treble clef (C4 to C5). The key signature has two sharps (F# and C#). The time signature is common time (C). The scale is written in ascending and descending order, including all chromatic alterations. A '+' sign is placed above the final note (D5) in the bass staff.

H chromatisch/Si chromatique/B chromatic

Two staves of musical notation for the B chromatic scale. The top staff is in bass clef (C4 to C5) and the bottom staff is in treble clef (C4 to C5). The key signature has two sharps (F# and C#). The time signature is common time (C). The scale is written in ascending and descending order, including all chromatic alterations. '+' signs are placed above the final notes (B5) in both staves.

A – Dur/La majeur/A major

Two staves of musical notation for the A major scale. The top staff is in bass clef and the bottom staff is in treble clef. Both are in 2/4 time and F# major. The scale is written in eighth notes. The bass clef starts on A2 and the treble clef starts on A4. There are '+' signs above the notes A4, B4, and C5 in both staves.

Fis – moll/Fa# mineur/F# minor

Two staves of musical notation for the F# minor scale. The top staff is in bass clef and the bottom staff is in treble clef. Both are in 2/4 time and F# minor. The scale is written in eighth notes. The bass clef starts on F#3 and the treble clef starts on F#4. There are '+' signs above the notes F#4, G4, and A4 in both staves.

Fis – moll melodisch/Fa# mineur mélodique/F# melodic minor

Two staves of musical notation for the F# melodic minor scale. The top staff is in bass clef and the bottom staff is in treble clef. Both are in 2/4 time and F# minor. The scale is written in eighth notes. The bass clef starts on F#3 and the treble clef starts on F#4. There are '+' signs above the notes F#4, G4, and A4 in both staves. A '6' is written above the G4 note in the bass clef, and a '4+' is written above the G4 note in the treble clef.

Fis – moll harmonisch/Fa# mineur harmonique/F# harmonic minor

Two staves of musical notation for the F# harmonic minor scale. The top staff is in bass clef and the bottom staff is in treble clef. Both are in 2/4 time and F# minor. The scale is written in eighth notes. The bass clef starts on F#3 and the treble clef starts on F#4. There are '+' signs above the notes F#4, G4, and A4 in both staves. A '6' is written above the G4 note in both staves.

A chromatisch/La chromatique/A chromatic

Two staves of musical notation for the A chromatic scale. The top staff is in bass clef and the bottom staff is in treble clef. Both are in 2/4 time and A major. The scale is written in eighth notes. The bass clef starts on A2 and the treble clef starts on A4. There are '+' signs above the notes A4, B4, and C5 in both staves.

Fis chromatisch/Fa# chromatique/F# chromatic

Two staves of musical notation for the F# chromatic scale. The top staff is in bass clef and the bottom staff is in treble clef. Both are in 2/4 time and F# minor. The scale is written in eighth notes. The bass clef starts on F#3 and the treble clef starts on F#4. There are '+' signs above the notes F#4, G4, and A4 in both staves.

E – Dur/Mi majeur/E major

$\text{♩} = 92$

f

p *f*

p *cresc.*

5 + 3 3 3 3 3 3 3 3 3 3

1° 2°

Cis – moll/Do# mineur/C# minor

$\text{♩} = 84$

f *p*

cresc. *f*

TROMBONE & PIANO

EMR 17018	RIMSKY-KORSAKOV	Concerto (Wagenhäuser)
EMR 329	RIMSKY-KORSAKOV	Concerto (Wagenhäuser)
EMR 213A	RIMSKY-KORSAKOV	Hummelflug
EMR 213A	RIMSKY-KORSAKOV	Le Vol du Bourdon
EMR 17020	RIMSKY-KORSAKOV	The Flight of the Bumble Bee
EMR 213A	RIMSKY-KORSAKOV	The Flight of the Bumble Bee
EMR 4237	RIMSKY-KORSAKOV	The Flight Of The Bumble Bee
EMR 4429	ROCHA, Gilles	Ave Maria
EMR 4331	ROCHA, Gilles	Derniers Mots...
EMR 4331	ROCHA, Gilles	Last Words...
EMR 4331	ROCHA, Gilles	Letzte Worte...
EMR 4395	ROCHA, Gilles	Peaceful World
EMR 2352	ROME, Harold	South America Take It Away
EMR 2150L	RUBINSTEIN, Anton	Melody & Romance
EMR 2063	RÜDISSE, Herbert	Allegro Barbaro
EMR 17007	SACHSE, Ernst	Concertino
EMR 2158	SACHSE, Ernst	Concertino
EMR 17004	SAINT-SAËNS, C.	Cavatine
EMR 2066A	SAINT-SAËNS, C.	Cavatine
EMR 2058L	SAINT-SAËNS, C.	Le Cygne
EMR 2280L	SAINT-SAËNS, C.	Romance
EMR 4234	SARASATE, Pablo De	Chansons Tziganes
EMR 4234	SARASATE, Pablo De	Gipsy Airs
EMR 4234	SARASATE, Pablo De	Zigeunerweisen
EMR 310	SATIE, Erik	3 Gymnopédies
EMR 2279	SAURER, Marcel	Contest Piece
EMR 2041	SCHNYDER, Daniel	Sonata
EMR 4386	SCHUBERT, Franz	Ave Maria (Oliver)
EMR 2042L	SCHUBERT, Franz	Die Forelle
EMR 6073L	SCHUBERT, Franz	Serenade D 957 N° 4
EMR 14021	SCHUMANN, Robert	Adagio & Allegro
EMR 8587	SEDLAK, Jan (Arr.)	Kalinka (5)
EMR 8631	SEDLAK, Jan (Arr.)	Shalom (5)
EMR 8675	SEDLAK, Jan (Arr.)	Two Guitars (5)
EMR 935L	SHOSTAKOVITCH, D.	Waltz N° 2
EMR 8653	STRAUSS, Johann	Emperor Waltz (5)
EMR 8609	STRAUSS, Johann	Radetzky March (5)
EMR 8563	STRAUSS, Johann	Rosen aus dem Süden (5)
EMR 8631	STRAUSS, Johann	Tritsch-Tratsch-Polka (5)
EMR 201	STUHEC, Igor	3 Stücke
EMR 5145	STURZENEGGER (Arr.)	11 Pieces (Barock)
EMR 8631	SUBA, Eduardo (Arr.)	Cielito Lindo (5)
EMR 8587	SUBA, Eduardo (Arr.)	La Paloma (5)
EMR 8609	SUBA, Eduardo (Arr.)	Tico-Tico (5)
EMR 2285L	TAILOR, Norman	El Choclo
EMR 2190	TAILOR, Norman	Four Miniatures
EMR 8543	TAILOR, Norman	Inca Dance (5)
EMR 2291L	TAILOR, Norman	Sousa Medley
EMR 8521	TAILOR, Norman (Arr.)	Danny Boy (5)
EMR 4407	TAUBER, Florian	25 Warm-Up
EMR 308	TELEMANN, G.Ph.	Concerto B-Dur
EMR 17015	TELEMANN, G.Ph.	Concerto Bb Major
EMR 309	TELEMANN, G.Ph.	Sonata c-moll (Slokar/Luy)
EMR 210	TIBOR, Georg	Introduzione - Tema e Variazioni
EMR 2188L	TRADITIONAL	Londonderry Air
EMR 4235	TRADITIONAL	Londonderry Air
EMR 2290L	TRADITIONAL	O Sole Mio (Richards)
EMR 2293L	TRADITIONAL	O Sole Mio (Saurer)
EMR 8521	VARIOUS	Greatest Hits Volume 1 (5)
EMR 8543	VARIOUS	Greatest Hits Volume 2 (5)
EMR 8563	VARIOUS	Greatest Hits Volume 3 (5)
EMR 8587	VARIOUS	Greatest Hits Volume 4 (5)
EMR 8609	VARIOUS	Greatest Hits Volume 5 (5)
EMR 8631	VARIOUS	Greatest Hits Volume 6 (5)
EMR 8653	VARIOUS	Greatest Hits Volume 7 (5)
EMR 8675	VARIOUS	Greatest Hits Volume 8 (5)
EMR 19021	VERDI, Giuseppe	Chorus Of Hebrew Slaves
EMR 2113	VOEGELIN, Fritz	Burlesque
EMR 4317	VOEGELIN, Fritz	Nordlicht-Variationen
EMR 2117	VON GRUNELIUS, W.	Vier Lyrische Stücke
EMR 17029	WAGENHÄUSER, W.	Coktail
EMR 331	WAGENHÄUSER, W.	Coktail
EMR 17032	WAGENHÄUSER, W.	Purzelbäume
EMR 229	WAGENHÄUSER, W.	Purzelbäume
EMR 17001	WAGENSEIL, G.C.	Concerto (Angerer)
EMR 222	WAGENSEIL, G.C.	Concerto (Angerer)
EMR 2305L	WEBER, C.M. von	Romance (Mortimer)
EMR 17006	WEBER, C.M. von	Romance (Wagenhäuser)
EMR 236	WEBER, C.M. von	Romance (Wagenhäuser)
EMR 205	ZETTLER, Richard	Concerto Primo

TROMBONE & PIANO (ORGAN)

EMR 905L	ALBINONI, Tomaso	Adagio
EMR 317L	ALBINONI, Tomaso	Konzert B-Dur
EMR 8443	ANDREWS, D. (Arr.)	The Old Rugged Cross (5)
EMR 903L	ARMITAGE, Dennis	28 Weihnachtsmelodien Vol. 1
EMR 904L	ARMITAGE, Dennis	28 Weihnachtsmelodien Vol. 2
EMR 911L	ARMITAGE, Dennis	4 Fanfares
EMR 908L	ARMITAGE, Dennis	Abide with me
EMR 906L	ARMITAGE, Dennis	Il Silenzio
EMR 906L	ARMITAGE, Dennis	Nobody Knows
EMR 906L	ARMITAGE, Dennis	So nimm denn meine Hände
EMR 902L	ARMITAGE, Dennis	Solo Album Vol. 01 (5)
EMR 905L	ARMITAGE, Dennis	Solo Album Vol. 02 (5)
EMR 906L	ARMITAGE, Dennis	Solo Album Vol. 03 (5)
EMR 907L	ARMITAGE, Dennis	Solo Album Vol. 04 (5)
EMR 908L	ARMITAGE, Dennis	Solo Album Vol. 05 (5)
EMR 909L	ARMITAGE, Dennis	Solo Album Vol. 06 (5)
EMR 910L	ARMITAGE, Dennis	Solo Album Vol. 07 (5)
EMR 911L	ARMITAGE, Dennis	Solo Album Vol. 08 (5)
EMR 912L	ARMITAGE, Dennis	Solo Album Vol. 09 (5)
EMR 913L	ARMITAGE, Dennis	Solo Album Vol. 10 (5)
EMR 909L	ARMITAGE, Dennis	Swing Low, Sweet Chariot
EMR 911L	BACH / GOUNOD	Ave Maria
EMR 902L	BACH, Johann S.	Aria
EMR 913L	BACH, Johann S.	Arioso
EMR 2104L	BACH, Johann S.	Chorale Prelude "Ich ruf zu Dir"
EMR 217L	BACH, Johann S.	Jesu, meine Freude (Reift)
EMR 8474	BACH, Johann S.	Lobe den Herrn (5)
EMR 2107L	BACH, Johann S.	Prelude D minor BWV 539 (Hilgers)
EMR 2103L	BACH, Johann S.	Prelude XX BWV 865 (Hilgers)
EMR 2106L	BACH, Johann S.	Prelude XXII BWV 867 (Hilgers)
EMR 905L	BEETHOVEN, L.v.	Die Ehre Gottes aus der Natur
EMR 908L	BEETHOVEN, L.v.	Ode to Joy
EMR 289L	BOND, Capel	Concerto Nr. 6 in Bb
EMR 911L	BORODIN, Alexander	Polovtsian Dance
EMR 908L	CHARPENTIER, M.A.	Te Deum
EMR 905L	CHOPIN, Frédéric	Tristesse
EMR 2001	CIRRI, G.	Sonata N° 1 (Cecil)
EMR 2002	CIRRI, G.	Sonata N° 2 (Cecil)
EMR 2003	CIRRI, G.	Sonata N° 3 (Cecil)
EMR 902L	CLARKE, Jeremiah	Trumpet Voluntary
EMR 2070L	CORELLI, A.	Sonata in g-minor
EMR 291L	CORRETTE, Michael	Sonata in D minor
EMR 8499	CRÜGER, Johann	Nun danket alle Gott (5)
EMR 912L	DEBUSSY, Claude	Clair de Lune
EMR 2039A	DELLA BELLA, D.	Sonata in C Major
EMR 907L	DVORAK, Antonin	Humoresque
EMR 912L	DVORAK, Antonin	Largo aus der Neuen Welt
EMR 6081L	FRANCK, César	Panis Angelicus
EMR 305L	FRANCK, Melchior	Suite de Danses (Sturzenegger)
EMR 2399	FRANZ, Ignaz	Grosser Gott, wir loben Dich (5)
EMR 2145L	GALLIARD, J.E.	6 Sonatas
EMR 2139L	GALLIARD, J.E.	Sonata N° 1 in A minor
EMR 2140L	GALLIARD, J.E.	Sonata N° 2 in G major
EMR 2141L	GALLIARD, J.E.	Sonata N° 3 in F major
EMR 2142L	GALLIARD, J.E.	Sonata N° 4 in E minor
EMR 2143L	GALLIARD, J.E.	Sonata N° 5 in D minor
EMR 2144L	GALLIARD, J.E.	Sonata N° 6 in C major
EMR 2035L	GERVAISE, Claude	Danses de la Renaissance
EMR 2222	GLAUSER, Max	Canzona
EMR 910L	GLUCK, C.W.von	Marche Religieuse
EMR 911L	GOUNOD, Charles	Ave Maria
EMR 910L	GRIEG, Edvard	Solvejgs Lied
EMR 2036L	GRILLO, G.B.	Canzon XV
EMR 906L	HÄNDEL, Georg Fr.	Arioso
EMR 910L	HÄNDEL, Georg Fr.	Largo
EMR 912L	HÄNDEL, Georg Fr.	March
EMR 902L	HÄNDEL, Georg Fr.	March Scipio
EMR 911L	HÄNDEL, Georg Fr.	Minuet
EMR 302L	HÄNDEL, Georg Fr.	Prelude & Fugue (Sturzenegger)
EMR 907L	HÄNDEL, Georg Fr.	Sarabande I
EMR 909L	HÄNDEL, Georg Fr.	Sarabande II
EMR 2399	HASSLER, H.L.	Passion Choral (5)
EMR 913L	HAYDN, Joseph	St. Anthony Choral
EMR 8443	KING, Peter (Arr.)	The Lord's My Shepherd (5)
EMR 2399	KOCHER, Conrad	Dix (5)
EMR 2463	LOEILLET, J.B.	Sonata
EMR 307L	LOEILLET, J.B.	Sonate As-Dur (Sturzenegger)
EMR 8499	LUTHER, Martin	Ein' fest Burg ist unser Gott (5)
EMR 8443	MACDUFF, G. (Arr.)	Jerusalem (5)
EMR 2048L	MARCELLO, B.	6 Sonatas
EMR 301L	MARCELLO, B.	Adagio - Largo - Allegretto
EMR 18417	MARCELLO, B.	Sonata in g minor, opus 2 N° 2
EMR 2043L	MARCELLO, B.	Sonata N° 1 in F major
EMR 2044L	MARCELLO, B.	Sonata N° 2 in E minor